

AWARENESS, EDUCATION AND SERVICES (AES)



UPDATED AS AT 08/11/2023

EDUCATION & TAX AWARENESS PROGRAMMES INVOLVING THE YOUNGER GENERATION / INSTITUTE OF HIGHER EDUCATION (IPT) / SCHOOLS

UPDATED AS AT 08/11/2023

TAXATION PROGRAMMES RELATED TO THE YOUNGER GENERATION / INSTITUTE OF HIGHER EDUCATION / SCHOOLS

3



Program Sahabat HASiL

1

2

HASiL Your Tax Buddy



Program Institut Pendidikan Guru (IPG)

7

PROGRAMMES

3

Malaysian Financial Planning Council (MFPC)



Siswapreneur Business Ethics and Compliance (SBEC)

6

4

Form 5 Mathematics : Taxation



Tax Competitions: Audit Firm

5

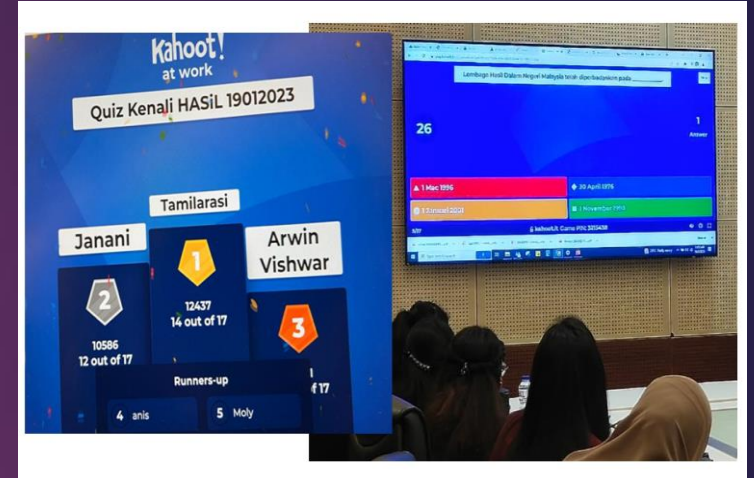
UPDATED AS AT 08/11/2023



Program Sahabat HASiL

1

- HASiL approaches IPT and secondary school students with visits to HASiL's premises or the IPT / School premises.
- Briefing in relation to Taxation in Malaysia, Tax Benefits, Getting to know HASiL and Careers at HASiL
- Taxation Quizzes



UPDATED AS AT 08/11/2023

2

HASiL Your Tax Buddy

- Collaboration programme between HASiL and the Ministry of Higher Education through Institutions of Higher Education (IPT) to approach and educate entrepreneurs among students.
- Briefing on Siswa Niaga Bijak Cukai
- Outdoor leisure activities: *HASiL Taxplorace*



UPDATED AS AT 08/11/2023

3

Malaysian Financial Planning Council (MFPC)



- Special programme for youths in relation to financial literacy issues that emphasises on the importance of basic knowledge in personal finances planning.
- Briefing on finance, taxation, insurance & takaful, investment and inheritance planning, as well as the opening of counters by various agencies.

MY www.mfpc.org.my
money&me

Rancang Kewangan, Demi Masa Depan
 "Plan your money, plant your future"

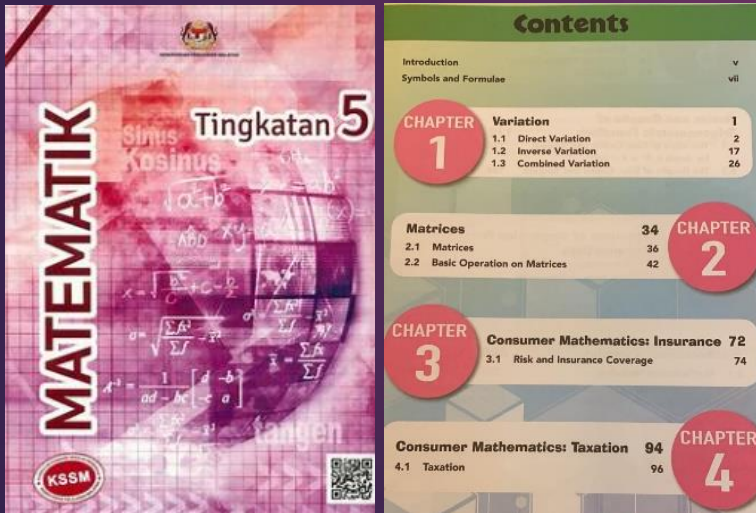


UPDATED AS AT 08/11/2023

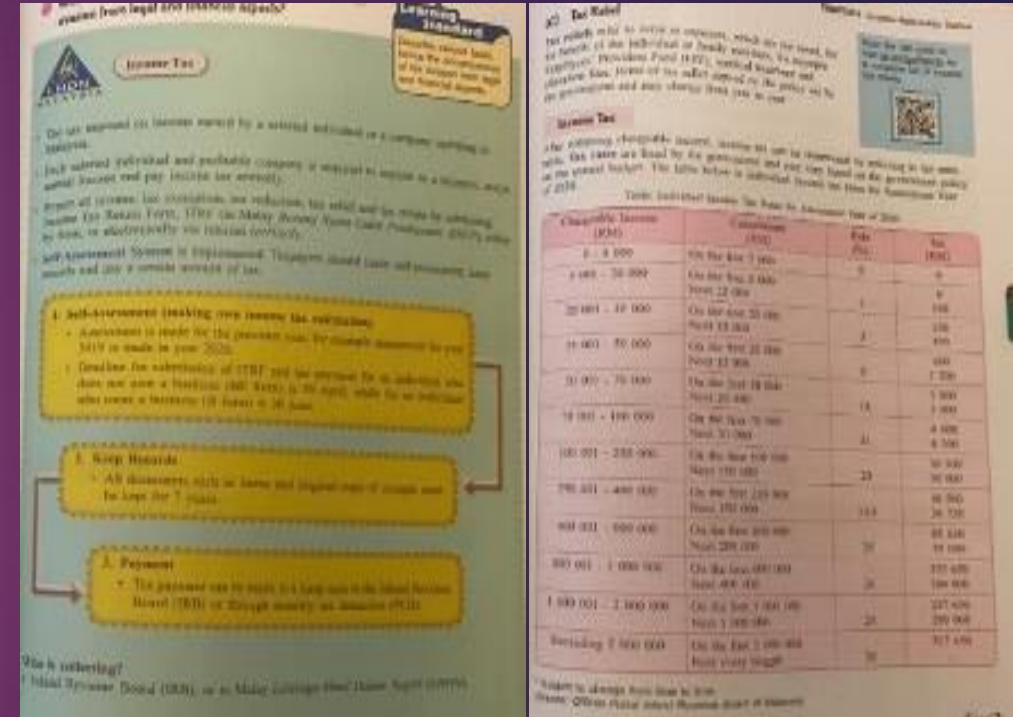
4

Form 5
Mathematics:
Taxation

- The topic of Taxation has been included in the Form 5 Mathematics Text Book to provide early exposure to taxes for high school students starting in 2021



CHAPTER 4 -
CONSUMER MATHEMATICS: TAXATION



RECORD KEEPING
PAYMENT OF TAXES
SELF ASSESSMENT

TAX RATE SCHEDULE -
INCOME TAX CALCULATION

UPDATED AS AT 08/11/2023

Tax Competitions: 5 Audit Firm

- HASiL is involved with the Ernst & Young Tax Professional of The Year (EY YTPY) programme and the Deloitte Tax Challenge, which is a competition participated by students of higher education institutes.
- This programme exposes students to taxation scenarios as well as real practical knowledge on tax.
- Participants have the opportunity to test their technical taxation skills, learn about business in a global context, as well as the role and system of local and international taxation.



UPDATED AS AT 08/11/2023



**Siswapreneur
Business Ethics
and Compliance
(SBEC)**

6

- The Siswapreneur Business Ethics and Compliance (SBEC) programme is a joint collaboration between the University of Islamic Sciences Malaysia (USIM) and the Ministry of Higher Education (KPT)
- Aims to provide exposure to students who run businesses, regarding taxation in business management.
- Programme - taxation briefing and a taxation quiz.



UPDATED AS AT 08/11/2023



Program Institut
Pendidikan Guru
(IPG)

7

- A program with prospective teachers at IPG Campus to provide early exposure regarding the responsibility of reporting income.
- Taxation briefings, taxation videos and taxation quizzes.
- Appointing prospective teachers as HASiL Ambassadors to channel taxation information to primary school students.



UPDATED AS AT 08/11/2023

TAX AWARENESS & EDUCATION PROGRAMMES TO EXISTING TAXPAYERS:

TAX PROFESSIONAL BODIES, COMPANIES, EMPLOYERS AND THE GENERAL PUBLIC

seminars / forums / briefings organised by HASiL, or through collaborative programs with other agencies

UPDATED AS AT 08/11/2023

IRBM Official Portal- <https://www.hasil.gov.my>

Selamat Datang ke Portal Rasmi

Lembaga Hasil Dalam Negeri Malaysia

Bersama-sama Membangunkan Negara

Pautan Popular

Situasi Saya

Pautan Pantas

EduZone

TV Komersial

Risalah Cukai

Video Wawancara

Video Kesedaran

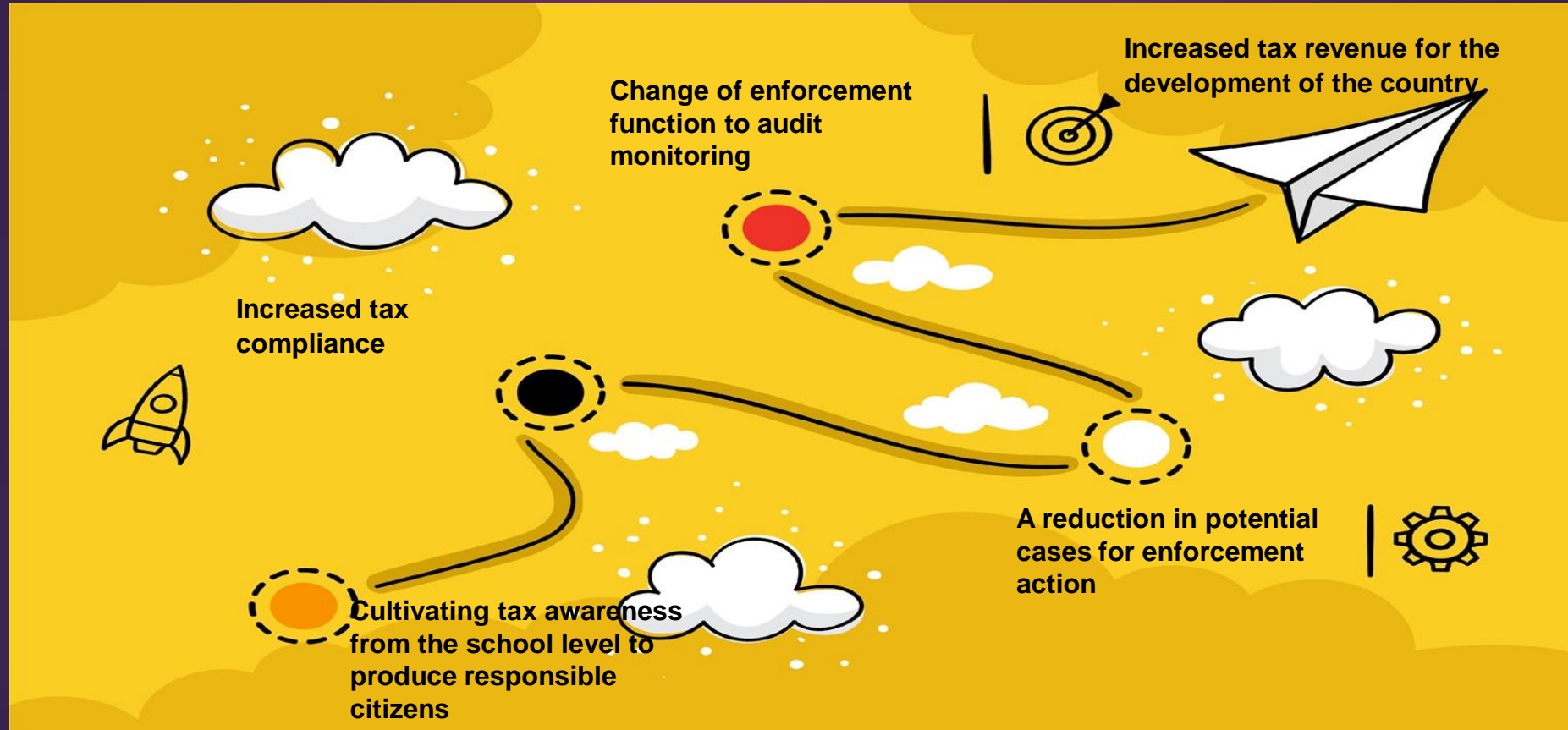
Video Manfaat Cukai

Slaid / Poster Percukaian

Penerbitan Cukai

UPDATED AS AT 08/11/2023

THE EFFECT OF TAX EDUCATION AT THE EARLY LEVEL



UPDATED AS AT 08/11/2023

THANK YOU

UPDATED AS AT 08/11/2023