

HAPPY NEW YEAR 2024 !

HASiL CONTACT CENTRE (HCC) :
HASiL CENTRALIZED COMMUNICATION CENTRE

HCC OPERATION HOURS :
MONDAY – FRIDAY
9.00 A.M – 5.00 P.M

OUR SERVICES :

INBOUND CALL

RESPONDING TO ENQUIRIES RECEIVED THROUGH PHONE CALLS :

- 03-8911 1000 (LOCAL LINE)
- 603-8911 1000 (OVERSEAS LINE)

OUTBOUND CALL

CONTACTING TAX PAYERS FOR NOTIFICATION OF REVENUE ARREARS, ADVANCE INSTALLMENT PAYMENT REMINDER AND FAILURE TO COMPLY WITH TAX INSTALLMENTS

HASiL LIVE CHAT

TWO-WAY INTERACTION CHANNELS ACCESSIBLE THROUGH MyTAX :
<https://mytax.hasil.gov.my/>

CUSTOMER FEEDBACK FORM

ANSWERING ENQUIRIES SUBMITTED VIA :
<https://maklumbalaspelanggan.hasil.gov.my/Public>

SOCIAL MEDIA

ANSWERING ENQUIRIES FROM THE COMMENT SECTION AND PRIVATE MESSAGE ON FACEBOOK / 'X'

RETURN FORM FILING PROGRAMME FOR THE YEAR 2024

The Return Form Filing Programme for the Year 2023 is now available at HASiL Official Portal, www.hasil.gov.my : Form > Return Form (RF) Filing Programme for The Year 2024 OR via : [RETURN FORM FILING PROGRAMME FOR THE YEAR 2024](#)

All categories of taxpayers are encouraged to refer to this programme as a guidance to tax reporting process with HASiL.

UTC HASIL COUNTERS' NEW OPERATING HOURS

Starting January 15th 2024, the new operating hours for HASiL Counters at the Urban Transformation Centre (UTC) nationwide are as follows:

NEW OPERATING HOURS	BREAK (FRIDAY)
Weekdays (by State) 8:00 A.M – 5:00 P.M (Closed on weekends by State and Federal/ State public holidays)	<u>Peninsular of Malaysia</u> 12:15 P.M – 2:45 P.M <u>Sarawak</u> 11:45 A.M – 2:15 P.M <u>Sabah and FT Labuan</u> 11:30 A.M – 2:00 P.M

Taxpayers are highly encouraged to utilize online services as an alternative for any tax-related matters with HASiL. Log on to www.hasil.gov.my for further information.

OPERATIONAL GUIDELINES NO.1/2024

In line with current requirements, operational guidelines related to Monthly Tax Deductions (MTD) have been issued to assist employers in accurately determining the correct and precise amount of MTD in accordance with the Income Tax (Deduction from Remuneration) Rules 1994 [P.U.(A) 507].

Operational Guidelines No.1/2024 : Monthly Tax Deductions Under The Income Tax (Deduction from Remuneration) Rules 1994 [P.U.(A) 507] which was issued on 2nd January 2024 explains the employer's responsibility in relation to the implementation of MTD on the employee's monthly salary as well as the method of determining the amount of MTD .

More information regarding these guidelines can be viewed on HASiL Official Portal, www.hasil.gov.my under the Legislation menu .

SVDP 2.0 INFO : INCOME RECEIVED / KEPT ABROAD

Any income received / derived from Malaysia regardless bank accounts held overseas, as well as foreign monetary received in Malaysia; i.e., income remitted or brought into Malaysia in the form of cash and/or fund transfers is subject to Malaysian Income Tax. Remittances must comply with the prevailing legislation.

The taxpayer is obliged to declare this income and eligible to participate in SVDP 2.0 if the income is not declared and tax is not paid in Malaysia. The taxpayer must declare the income based on the assesment year(s) it was received and subject to the terms and conditions.

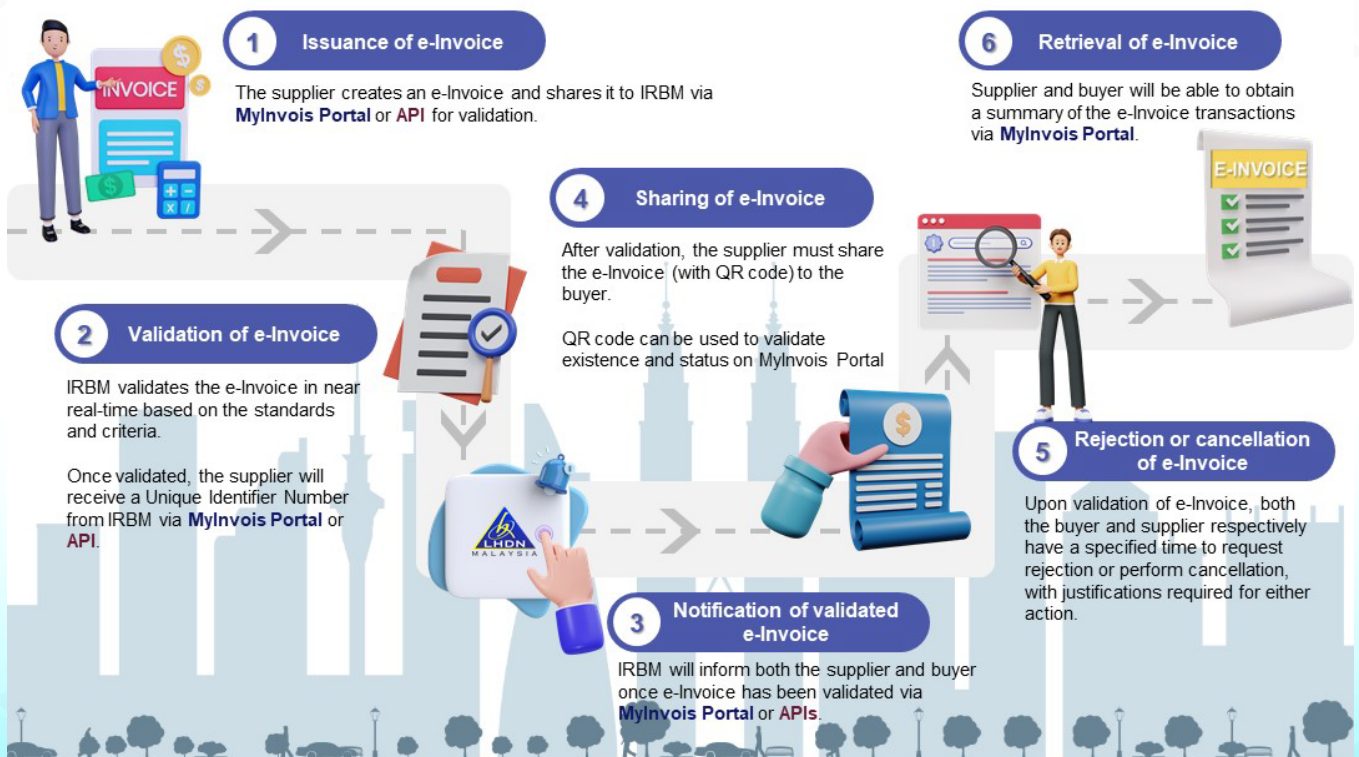
Further information on SVDP 2.0 can be obtained from the HASiL Official Portal, www.hasil.gov.my under Top Pages.

NATIONAL INITIATIVE : E-INVOICE

An e-Invoice is a digital representation of a transaction between a supplier and a buyer. e-Invoice replaces paper or electronic documents such as invoices, credit notes, and debit notes.

An e-Invoice contains the same essential information as traditional document, for example, supplier's and buyer's details, item description, quantity, price excluding tax, tax, and total amount, which records transaction data for daily business operations.

E-INVOICE OVERVIEW WORKFLOW



For more info, visit e-Invoice Microsite: <https://www.hasil.gov.my/en/e-invoice/>



www.hasil.gov.my



@HASiLMalaysia



@HASiL_Malaysia



@hasil_malaysia



03-8911 1000

MORE INFORMATION ON E-INVOICE

- 1) Refer to the e-Invoice microsite on HASiL Official Portal : www.hasil.gov.my,
- 2) Refer to e-Invoice Guidelines and FAQs, or
- 3) Drop an e-mail to myinvois@hasil.gov.my for further queries and feedback

SCAMMER ALERT :

TAXPAYERS ARE RECOMMENDED NOT TO GIVE PERSONAL INFORMATION SUCH AS IDENTIFICATION CARD NUMBERS, BANK ACCOUNT NUMBERS OR OTP NUMBERS (ONE-TIME PASSWORD) TO UNKNOWN PARTIES. PLEASE CONSULT WITH HASIL FOR YOUR TAX MATTERS.

BE CAREFUL AND DON'T BE FOOLED.