

# LATEST HASiL INITIATIVE

## Monthly Tax Deduction (MTD) Notification

Automatic email notifications to taxpayers on credited deductions

## e-Extension Of Time

Online application for extension of time for income Tax Return Forms submission

## e-Daftar e-KYC

Tax Identification Number (TIN) registration for non-citizens via digital verification (e-KYC)

## e-Rayuan

Phased implementation of online appeal for selected files under Large Tax Payer Branch (CPCB) and HASiL Wilayah Persekutuan Kuala Lumpur (WPKL)

## EDITION

# FOCUS

### e-Invoice Highlights

HASiL's community outreach through roadshows and interactive events

### TEKAD HASiL 2026 – 2030

HASiL's five-year strategic corporate direction

### Travel Restrictions

Enforcement mechanism reflecting tax responsibility and integrity



# MONTHLY TAX DEDUCTION (MTD) NOTIFICATION

- MTD notifications are now issued automatically to taxpayers via their registered email addresses on MyTax.
- Serve as official confirmation that monthly tax deductions made by employers have been credited to the taxpayer's ledger.
- Taxpayers are encouraged to ensure that their email information on MyTax are valid and updated to receive timely notifications each month.



## e-EXTENTION OF TIME

- The e-EOT service allows taxpayers to submit online applications for extension of time for Income Tax Return Forms beginning from YA 2025.
- Submissions are processed automatically and in real time (subject to eligibility criteria).
- Approval status can be checked online.
- Eligible forms include:
  1. Companies (C)
  2. Co-Operative Societies (C1)
  3. Limited Liability Partnerships (PT)
  4. Trust Bodies (TA / TC / TR / TN)
  5. Petroleum (CPP / CPE)
- Access: <https://mytax.hasil.gov.my>

Klik

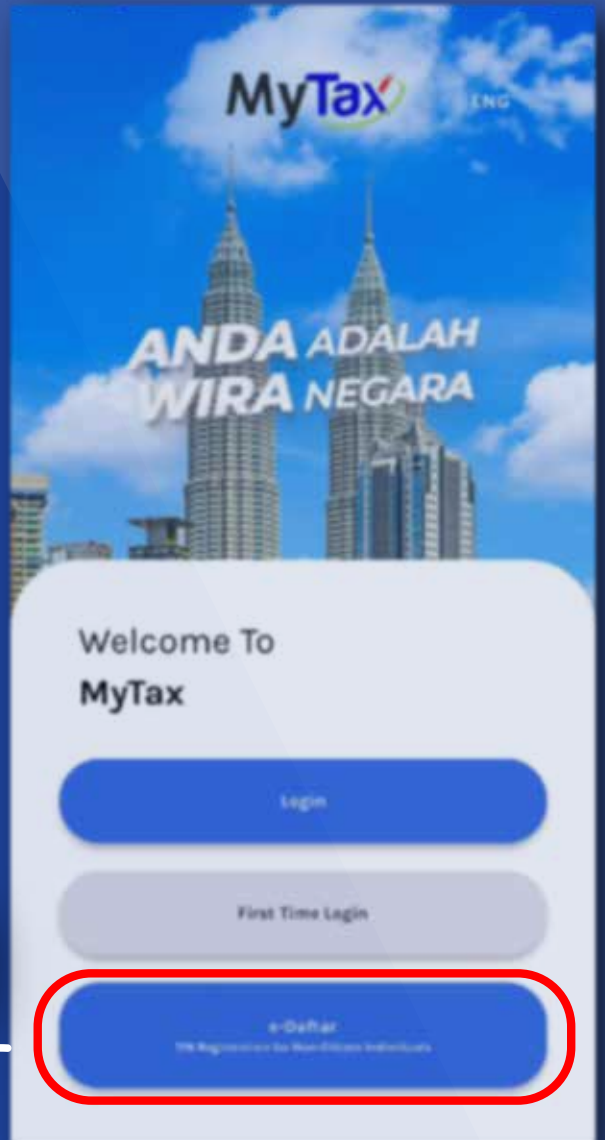


>> Log In >> ezHasil Services >> e-Lanjutan Masa

# e-DAFTAR e-KYC

The Tax Identification Number (TIN) registration process is now enhanced with e-KYC facial recognition technology, enabling secure digital verification of identity.

**Non-citizens can now register for a TIN using their passport via MyTax.**



## e-RAYUAN

- Phased pilot implementation of the e-Rayuan system for selected taxpayers under Large Tax Payer Branch (CPCB) and HASiL Wilayah Persekutuan Kuala Lumpur (WPKL).
- Allows online submission of Form Q and Form N for appeals under ACP 1967 (excluding Real Property Gain Tax (RPGT), withholding tax and investigation-raised assessments).
- Eligible taxpayers may access e-Rayuan via:

<https://mytax.hasil.gov.my>

Klik  >> Log In >> ezHasil Services >> e-Rayuan

# LATEST ON e-Invoice

In line with the rollout of e-Invoice, HASiL continues to actively promote the use of MyInvois through nationwide roadshows and participation in major public events.

Interactive MyInvois HASiL booths offer quick guidance, business digitalisation tips and live demonstrations of the MyInvois system.

## Program Jelajah **JIWA SME** 2025

24 - 26 October 2025  
The Curve, Mutiara Damansara



7 - 9 November 2025  
Stadium Batu Kawan, Pulau Pinang



# TEKAD HASIL 2026-2030

The official five-year corporate strategic document that outlines HASIL's vision, mission and key strategies.



## VISION

HIGH-PERFORMANCE  
TAX ADMINISTRATOR

## MISSION

ENHANCING THE PERFORMANCE  
AND COMPETITIVENESS OF TAX  
ADMINISTRATION IN ALIGNMENT  
WITH NATIONAL ASPIRATIONS



Scan the QR code  
for more information

# TRAVEL RESTRICTIONS

## Who may be subject to Travel Restrictions?

1. Individuals with outstanding Income Tax or Real Property Gain Tax (RPGT).
2. Company directors responsible for corporate tax arrears, particularly those holding  $\geq 20\%$  shareholding.
3. Applicable to both citizens and non-citizens.

1. HASiL issues official notices, emails and reminder calls before enforcement is taken.
2. Checks and payments can be made via the MyTax Portal.
3. Status checks are also available on the official website of the [Immigration Department of Malaysia \(JIM\)](#)
4. Avoid scams – settle tax arrears only through ByrHASiL, not via personal accounts.

## How is the process enforced?

## How to lift a Travel Restriction?

1. Fully settle outstanding taxes via ByrHASiL.
2. Submit proof of payment to the assigned officer.
3. HASiL will process the lifting of the restriction.
4. Plan ahead to avoid travel delays.

1. Contact a HASiL office for settlement negotiations.
2. Apply for temporary release (for a period of up to 3 months) by submitting a written request with supporting documents.
3. Make an approved upfront payment and arrange for an instalment plan for the remaining balance.

## If unable to pay in full?

## e-Sekatan Perjalanan

1. A digital service via MyTax to expedite the lifting of travel restrictions.
2. Eligibility:
  - a. Malaysian citizens;
  - b. Tax arrears fully settled;
  - c. Cases under ACP 1967; and
  - d. Not involving company director cases.
3. Complete applications will be processed within five (5) working days.
4. For ineligible cases, taxpayers may still apply manually through the official channel through this link:

[Customer Feedback](#)



**REMINDER!**

MESEJ AMARAN



**BEWARE OF  
TAX SCAM SYNDICATES**

OK



## Verify authenticity through:

- HASiL Contact Centre: 03-8911 1000 / 603-8911 1000 (Overseas);
- HASiL Live Chat;
- HASiL Feedback Form at;  
<https://maklumbalaspelanggan.hasil.gov.my/Public/>
- Visit the nearest HASiL office.

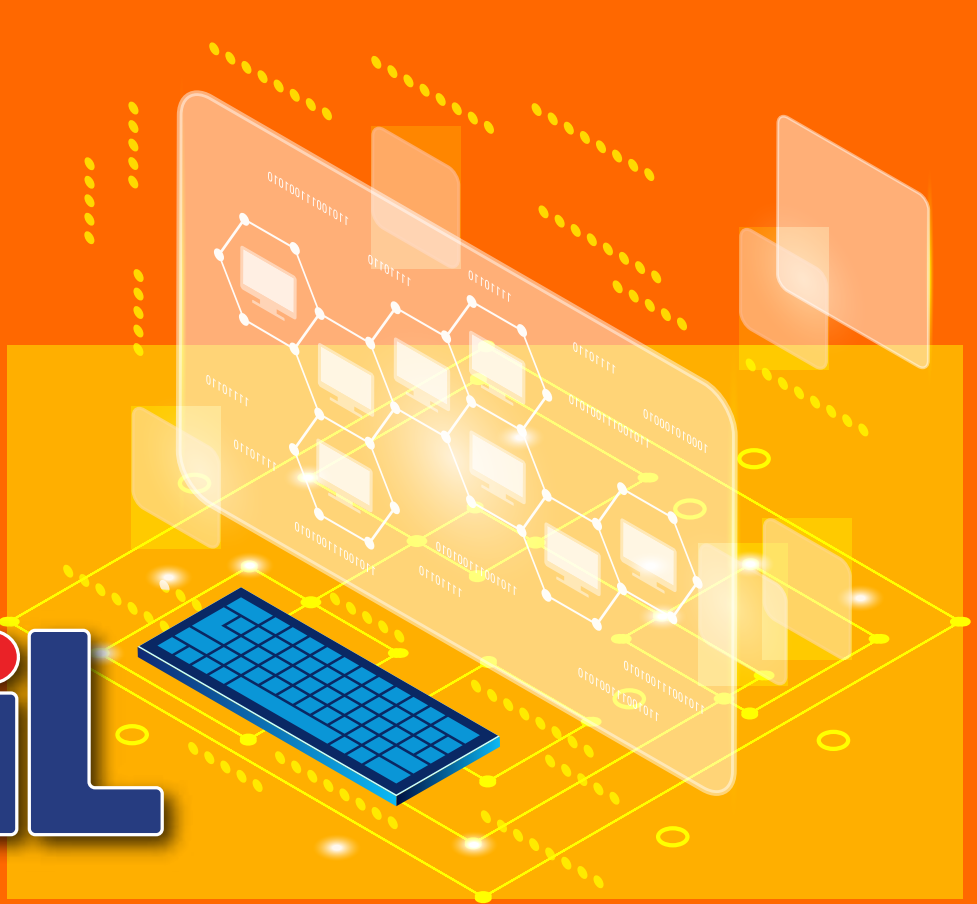
Do not disclose banking details;

Do not click on suspicious links;

Tax payments only through HASiL's official channels;

Ensure HASiL emails use the domain [@hasil.gov.my](mailto:@hasil.gov.my).





# HASiL

**HASiL remains committed to strengthening Malaysia's tax administration through digital transformation, transparent enforcement and continuous community engagement. Follow HASiL at:**



[www.hasil.gov.my](http://www.hasil.gov.my)



03-8911 1000



HASiLMalaysia



@HASiL\_Malaysia



@hasil\_malaysia

*Your Tax, Our Future*